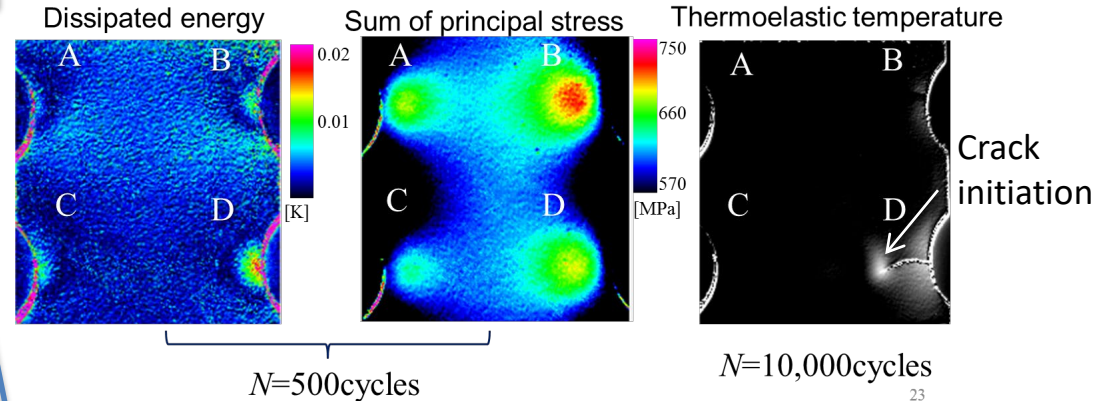


Non-destructive Evaluation for Steel Structure using Infrared Thermography



Detection of crack, evaluation of crack propagation, and verification of repairing by **the thermoelastic stress analysis**

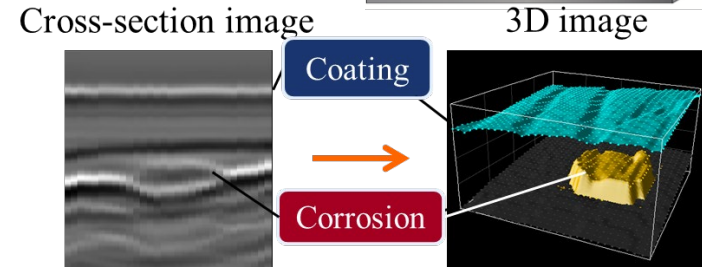
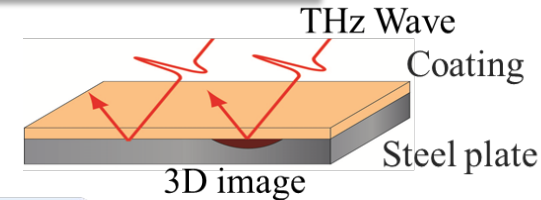
Estimation of Crack Initiation Based on Dissipated Energy Measurement



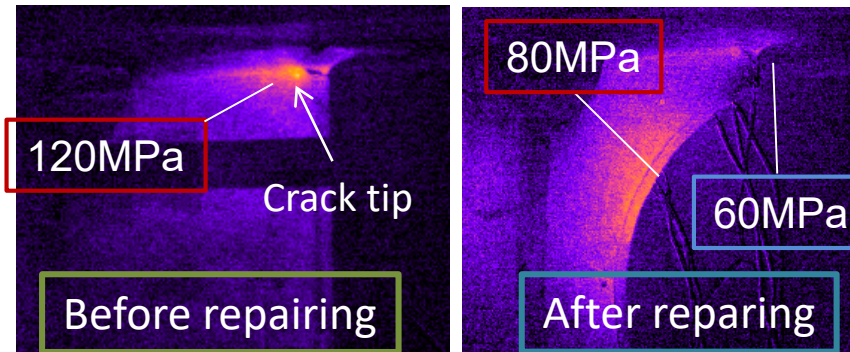
Shiozawa D., Inaba K., Akai A. and Sakagami T., 2014, Advanced Materials Research, Vol. 891-892, pp. 606-611.

Non-destructive Testing using Terahertz Electromagnetic Wave

Detection of corrosion in the steel under coating



Sakagami T., Shiozawa D., Tamaki Y. and Iwama T., 2016, Proc. SPIE 9861, Thermosense: Thermal Infrared Applications XXXVIII



Sakagami T., 2015, Remote Nondestructive Evaluation Technique Using Infrared Thermography for Fatigue Cracks in Steel Bridges, Fatigue & Fracture of Engineering Materials & Structures, Vol. 38, pp. 755-779.